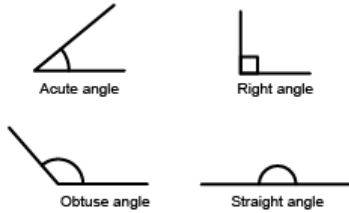


Activity 4 Assessment

2-D Shapes and Angles Consolidation

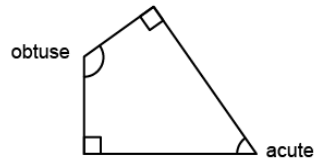
Identifying and Classifying Angles

Identifies and classifies angles as right, obtuse, acute or straight.



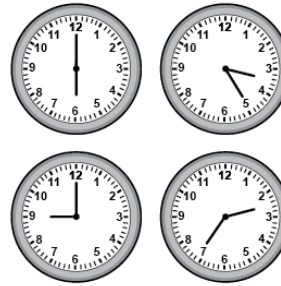
"I know that a right angle has perpendicular lines that make a 90° angle."

Identifies and classifies angles within shapes.



"This shape has 2 right angles, 1 obtuse angle, and 1 acute angle."

Identifies and classifies angles in the real world.



"Clocks can show different types of angles and can be used as benchmarks to classify objects."

Flexibly locates, identifies, and classifies angles in the real world.

"I can find all 4 types of angles in this window and doorway."



Observations/Documentation

Activity 4 Assessment

2-D Shapes and Angles Consolidation

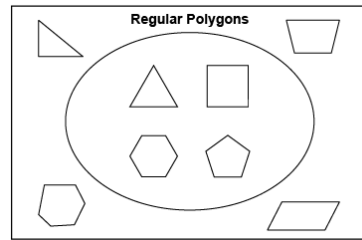
Sorting Polygons

Recognizes a polygon as a closed shape with straight lines.



"I know these are polygons because they are closed shapes with straight sides."

Understands that regular polygons have equal sides and equal angles.



"The shapes inside the loop are regular polygons because they have equal sides and equal angles."

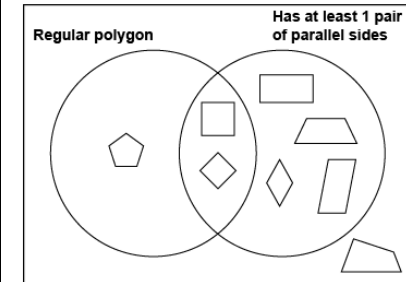
Describes differences and similarities between regular and irregular polygons.

Regular and Irregular Polygons

Name	Regular	Irregular
Triangle		
Quadrilateral		
Pentagon		
Hexagon		
Octagon		

"The polygons in the second row are both quadrilaterals because they both have 4 sides. The square is a regular polygon because it has 4 equal sides and 4 equal angles, but the other quadrilateral is irregular because it does not have any equal sides."

Flexibly identifies and classifies polygons.



"I sorted the polygons using the Venn diagram. The irregular quadrilateral is outside of the loops because it has neither attribute."

Observations/Documentation