



The Treasure Hunt

Written by Amelia Edwards
Illustrated by David Sheldon

Lee Aucoin, *Creative Director*
Jamey Acosta, *Senior Editor*
Heidi Fiedler, *Editor*
Produced and designed by
Denise Ryan & Associates
Illustration © David Sheldon
Rachelle Cracchiolo, *Publisher*

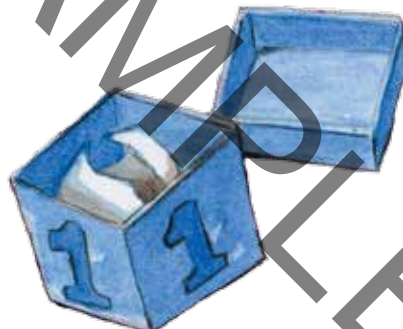
Teacher Created Materials

5301 Oceanus Drive
Huntington Beach, CA 92649-1030
<http://www.tcmpub.com>

Paperback: ISBN: 978-1-4333-5522-6

Library Binding: ISBN: 978-1-4807-1690-2

© 2014 Teacher Created Materials



The Treasure Hunt

Written by Amelia Edwards
Illustrated by David Sheldon

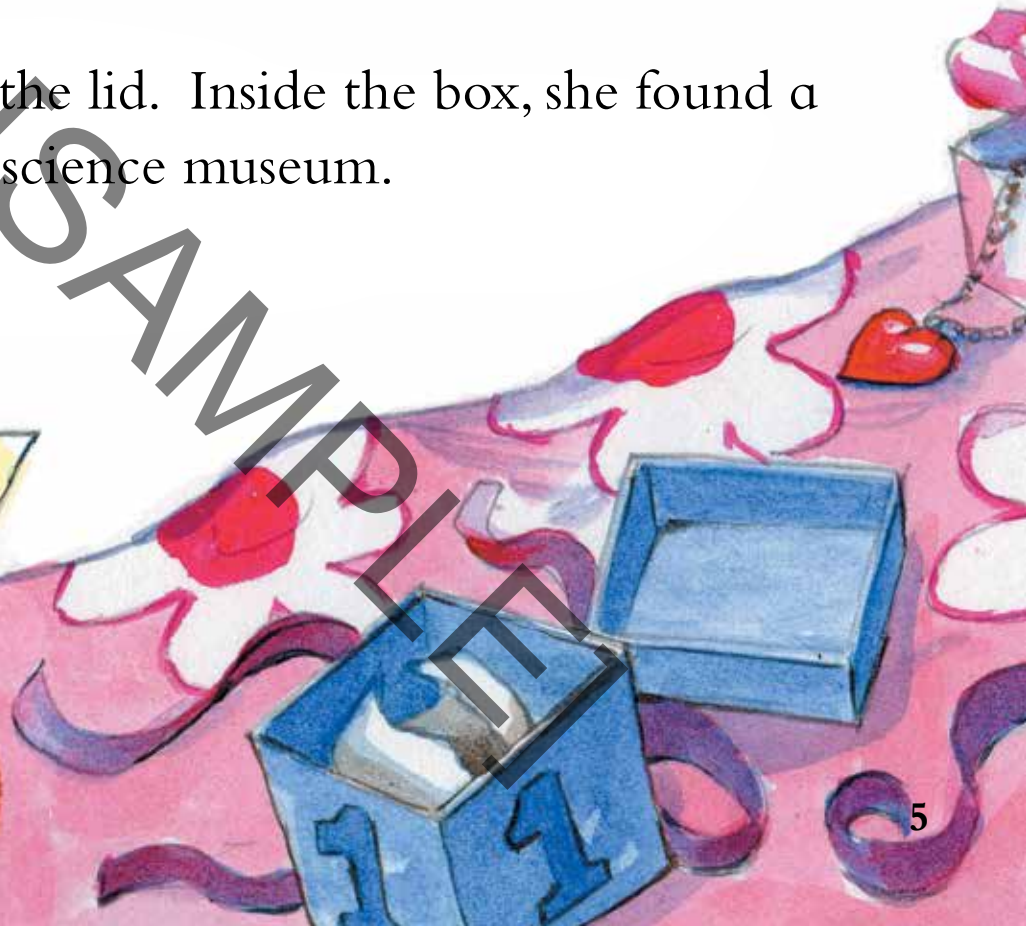
It was Opal's seventh birthday. She opened her presents and read her cards. Then, there was just a small blue box left to open.







Opal lifted the lid. Inside the box, she found a map of the science museum.



She also found a note that said:

You're going on a treasure hunt.
Use your map to find a great surprise.

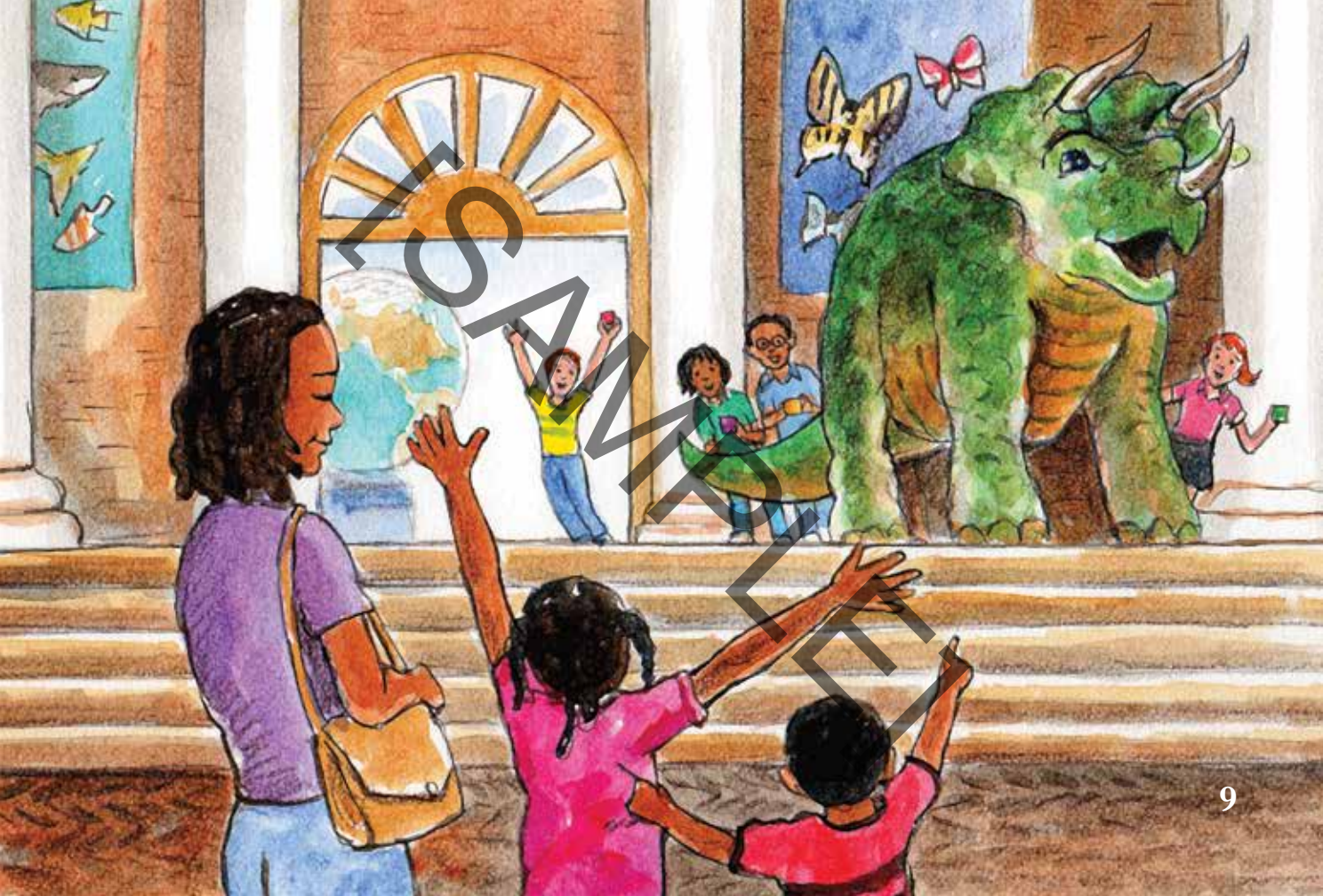
Clue 1

Go downtown to the science museum.
You won't believe your eyes!



Opal's mom and brother took her to the science museum, and as Opal walked up the steps, she really couldn't believe her eyes!

“Surprise!” said all her friends. “We’re here to help you find your birthday treasure. We each have a clue!”



Rebecca opened her box.

Clue 2

Go to the Bird Life Hall.

Find a bird whose name starts with an o.

When mice meet him late at night,
they always squeal, "Oh, no!"

ow



In the bird hall, Benjamin opened his box.

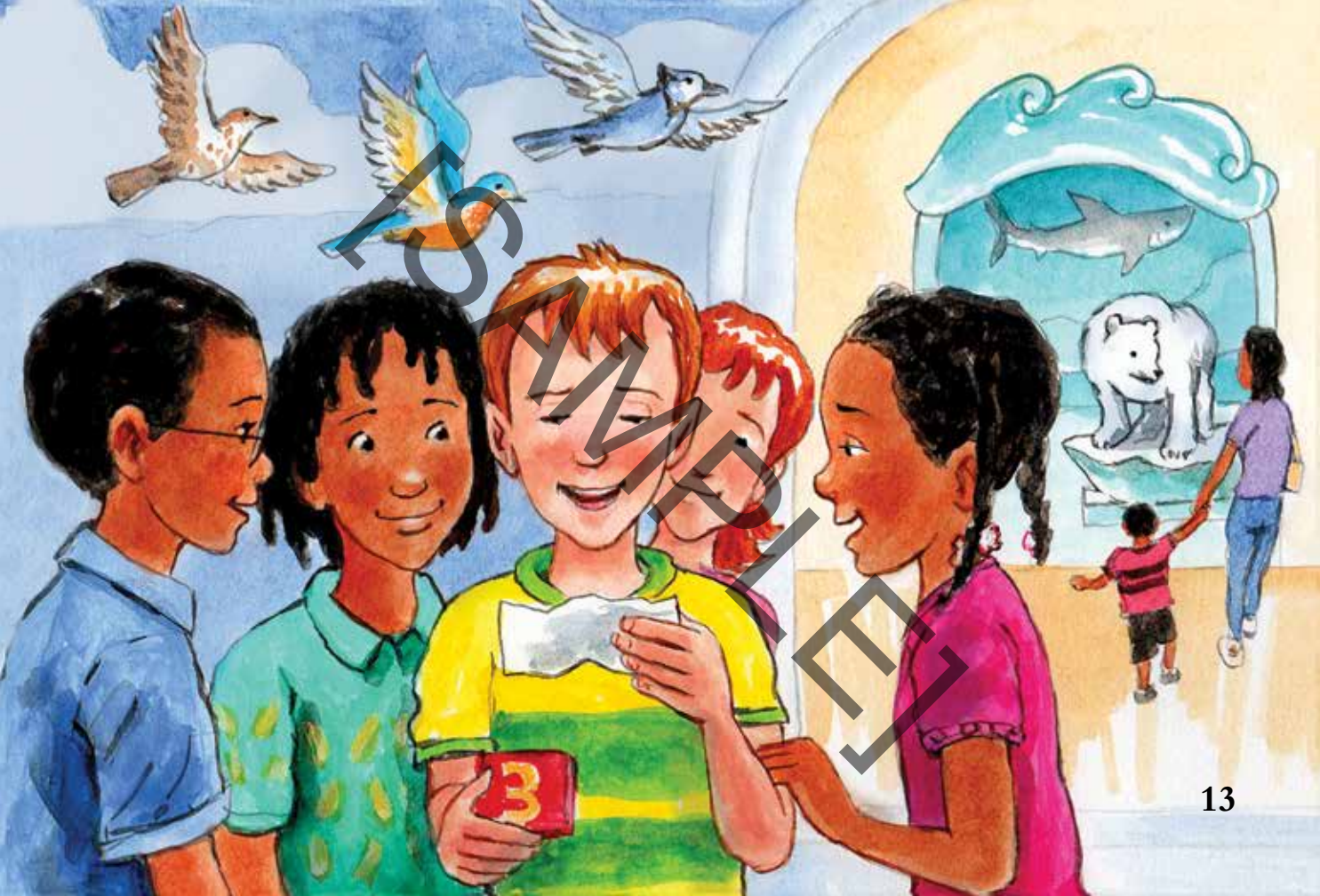
Clue 3

Go to the Ocean Life Hall.

Find an animal that lives near the freezing sea.

It's white, furry, and begins with the letter p.

polar bear



Next, Marianna opened her box.

Clue 4

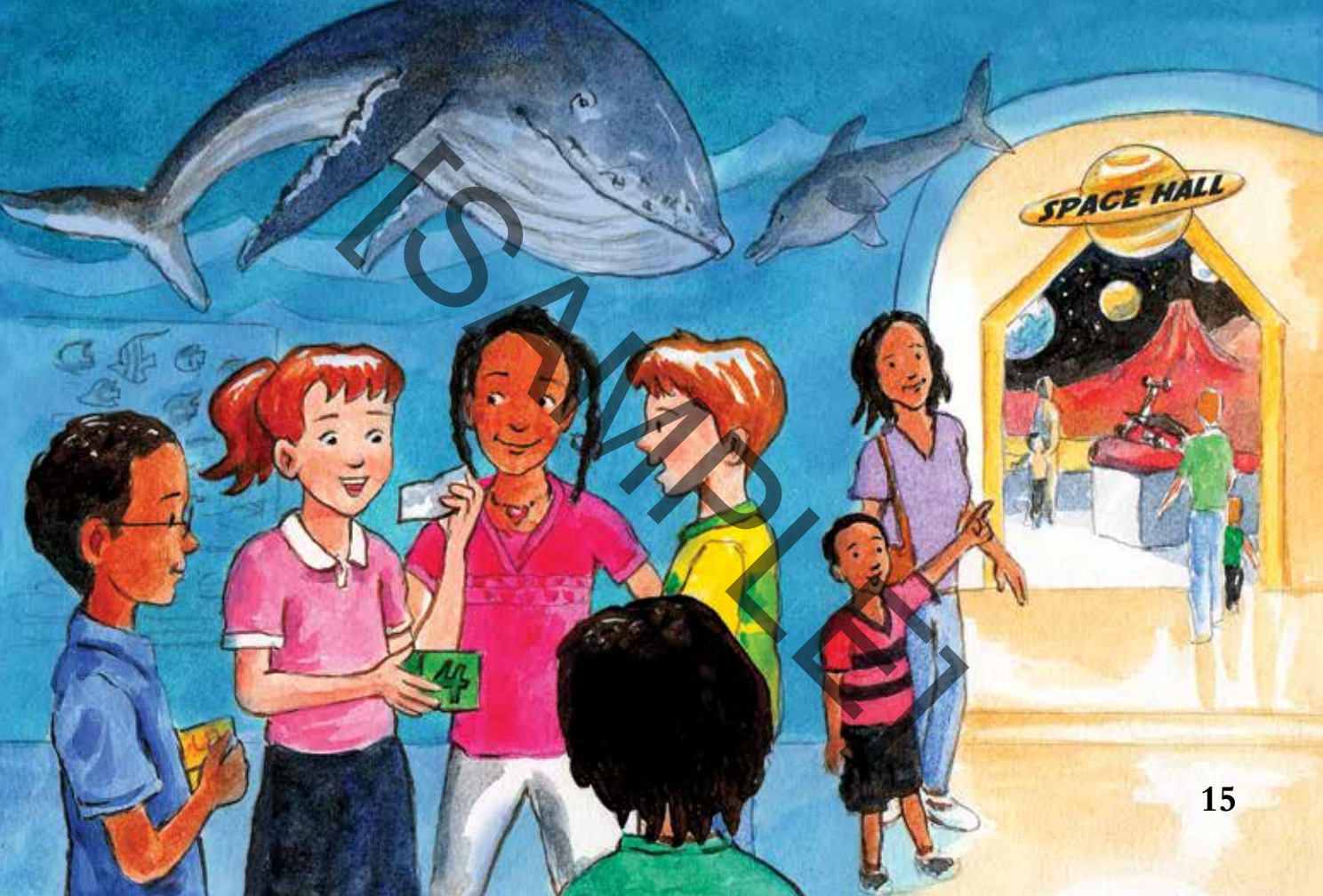
Go to the Space Hall.

Find a planet that's far away.

It's red and has a huge volcano.

The second letter in it is *a*.

Mars



Next, Elliot opened his box.

Clue 5

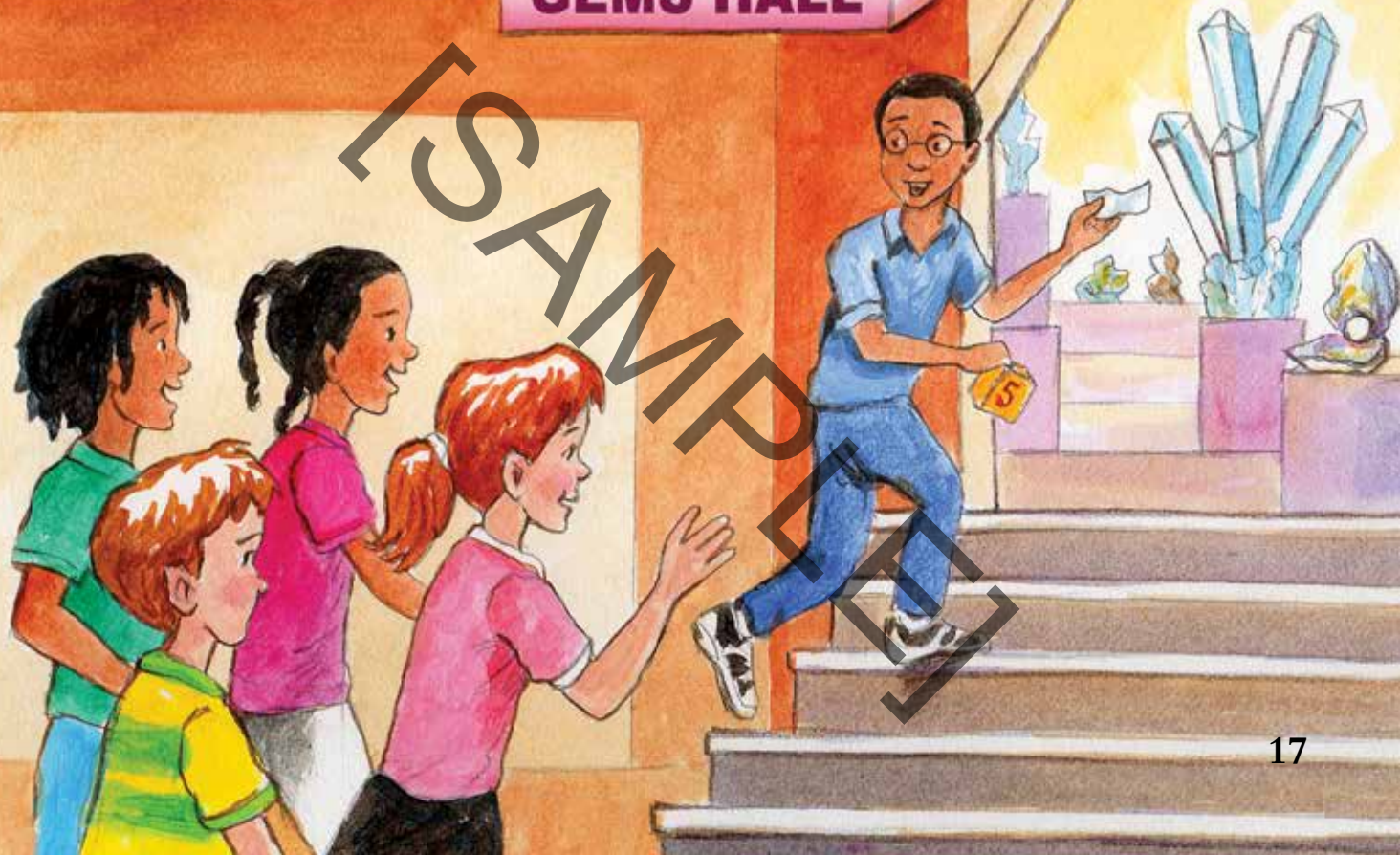
Go to the Gems Hall.

Find a gem that grows in a shell.

It's round and shiny, and its last letter is l.

pearl

GEMS HALL



Opal's brother opened his box.

Clue 6

Now, you must use all your clues.

They are:

The first letter in *owl*.

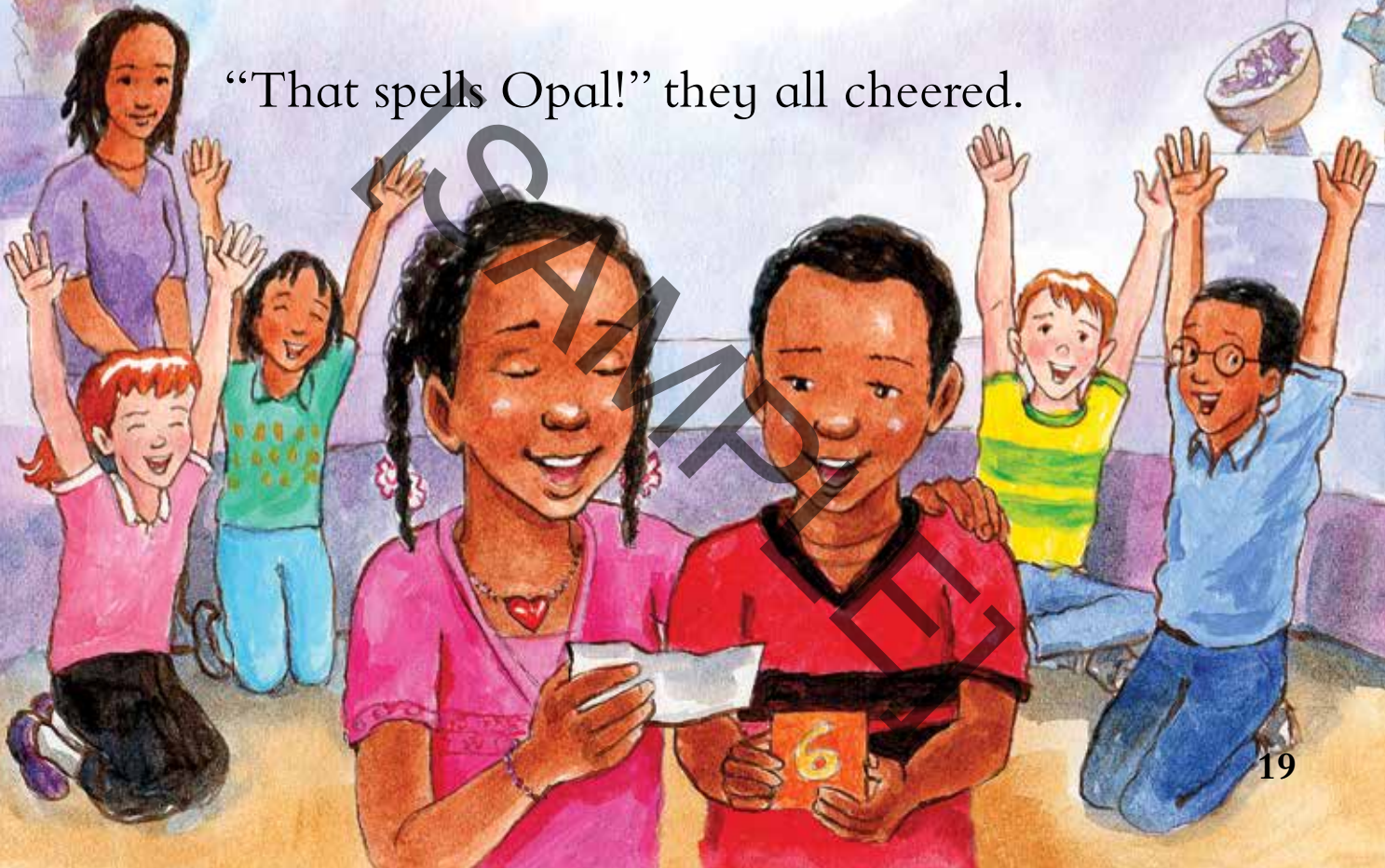
The first letter in *polar bear*.

The second letter in *Mars*.

The last letter in *pearl*.

Put the letters together.

“That spells Opal!” they all cheered.



Opal was given the final box. Inside, there were party hats for everyone. They put them on while Opal read the very last clue.





Clue 7

Go to the Food Hall.
The treasure waits for you.
Now it's time for a party.
Happy birthday to you!



FOOD HALL



Happy Birthday, Opal!



Thank you for purchasing this eBook.

This eBook is copyrighted. If you accessed this eBook without making payment, you should be aware that neither the author nor the publisher has received any compensation, and you may be in violation of state, federal, and/or international law.

For further information about our products and services, please e-mail us at:
customerservice@tcmpub.com.

**Thank you for helping us
create a world in which
children love to learn!**