

BBC

LET'S LEARN ABOUT...

THE LAND



PERSONAL, SOCIAL, AND
EMOTIONAL DEVELOPMENT
PROJECT BOOK

CONTENTS

| | | |
|-----------|--|-----------|
| U1 | WHAT DO YOU LIKE ABOUT YOURSELF? | 5 |
| U2 | WHY DO WE GO TO SCHOOL? | 13 |
| U3 | HOW CAN YOU HELP YOUR FAMILY AT HOME? | 21 |
| U4 | WHY DO WE FEEL HOT OR COLD? | 29 |
| U5 | WHAT OTHER LIVING THINGS ARE AROUND US? | 37 |
| U6 | WHY IS FOOD IMPORTANT? | 45 |
| U7 | HOW CAN FARM ANIMALS HELP US? | 53 |
| U8 | WHO LIVES AND WORKS IN MY TOWN? | 61 |
| | STICKERS | 81 |

LOOK AND STICK A HAPPY OR A SAD FACE. 🙄 🍏



THINK!
WHAT CAN HAPPEN IF
YOU DON'T WASH YOUR
HANDS BEFORE YOU EAT?



LOOK AND CHECK. WHICH PICTURE IS CORRECT?  



THINK!
WHAT DO YOU DO
WHEN YOU SNEEZE?



LISTEN AND DRAW A HAPPY OR SAD FACE.



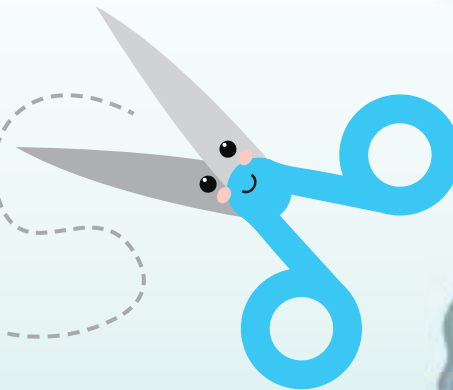
**TELL A CLASSMATE WHAT MAKES
YOU HAPPY OR SAD.**



**LISTEN AND TELL A CLASSMATE.
CAN THEY ALL PLAY TOGETHER?**



LISTEN. CHECK THE RIGHT WAY.
MARK AN X ON THE WRONG WAY.



THINK!
HOW DO YOU FEEL WHEN
YOUR CLASSROOM IS MESSY?



LISTEN AND NUMBER.



THINK!
WHAT IS YOUR FAVORITE
ACTIVITY AT SCHOOL?

LISTEN AND CHECK THE CORRECT BEHAVIOR.



LISTEN AND MARK AN X.

WHO IS NOT FOLLOWING THE RULES?



PLAY FOLLOW THE BOSS.

