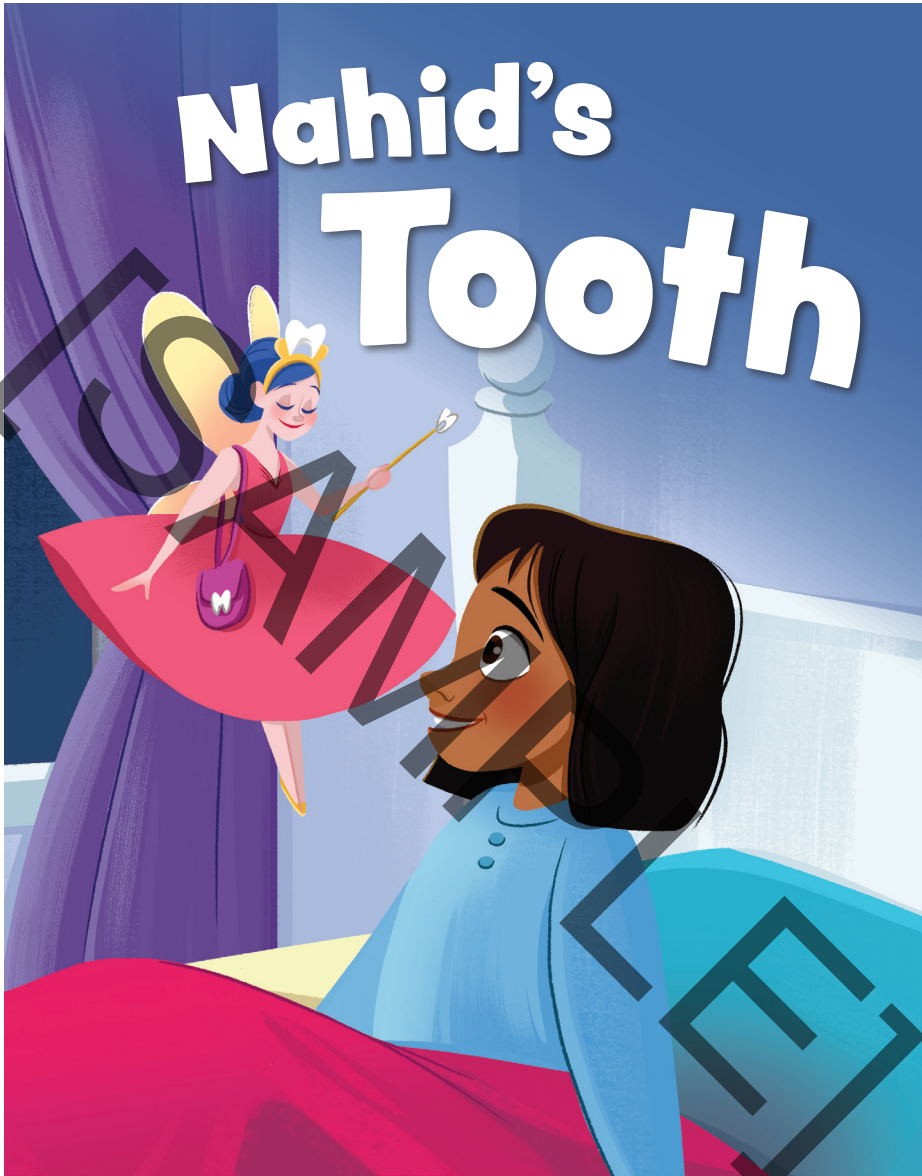


Nahid's Tooth



By Parvaneh Jacobs
Illustrated by Ria Maria Lee



By Parvaneh Jacobs
Illustrated by Ria Maria Lee

Wiggle, wiggle.

Nahid's tooth is loose.

Wiggle, wiggle.

So long, tooth!

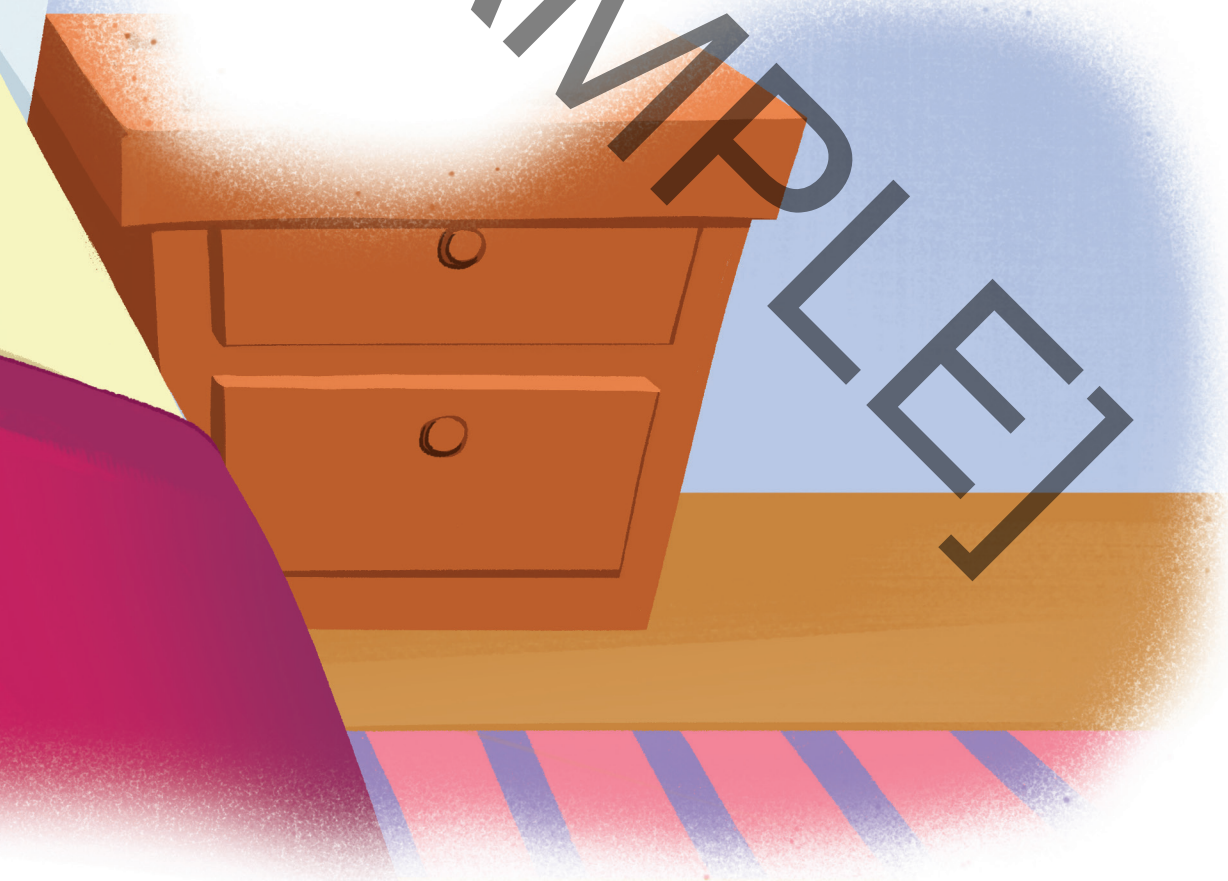




Nahid can't sleep.

She does not want to say
goodbye to her tooth.

She does not want a coin
under her pillow.



Soon, she sees the
Tooth Fairy.

“Hello!” Nahid says.



CSAMP

“Here is your coin.
Say goodbye to your tooth!”



“Wait!” Nahid says.
“I don’t want to say
goodbye.”



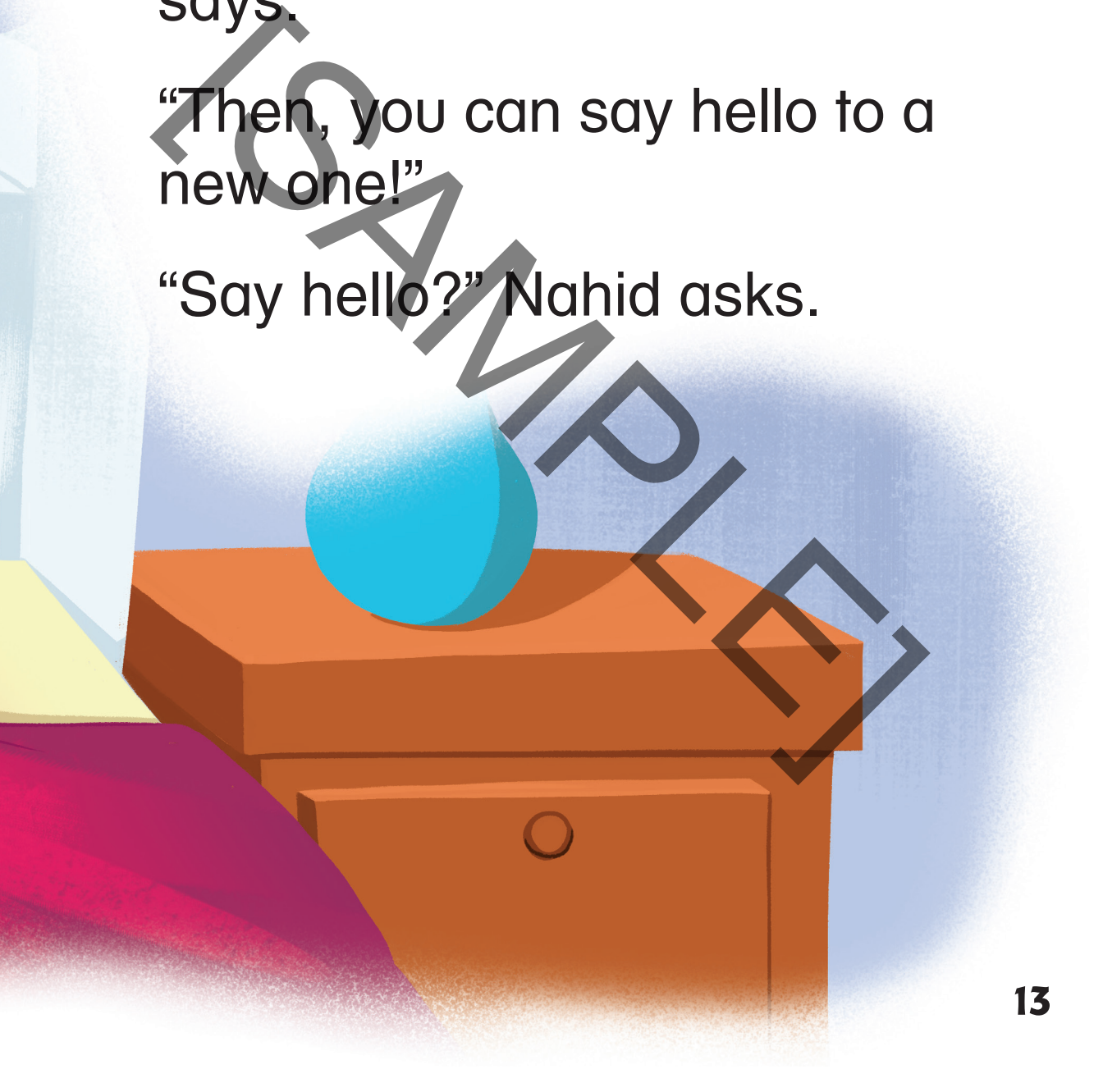




“It’s good to say goodbye to your old tooth,” the Tooth Fairy says.

“Then, you can say hello to a new one!”

“Say hello?” Nahid asks.



“Say hello to where a new tooth will grow!”

The Tooth Fairy shows Nahid in a mirror.

Nahid smiles.





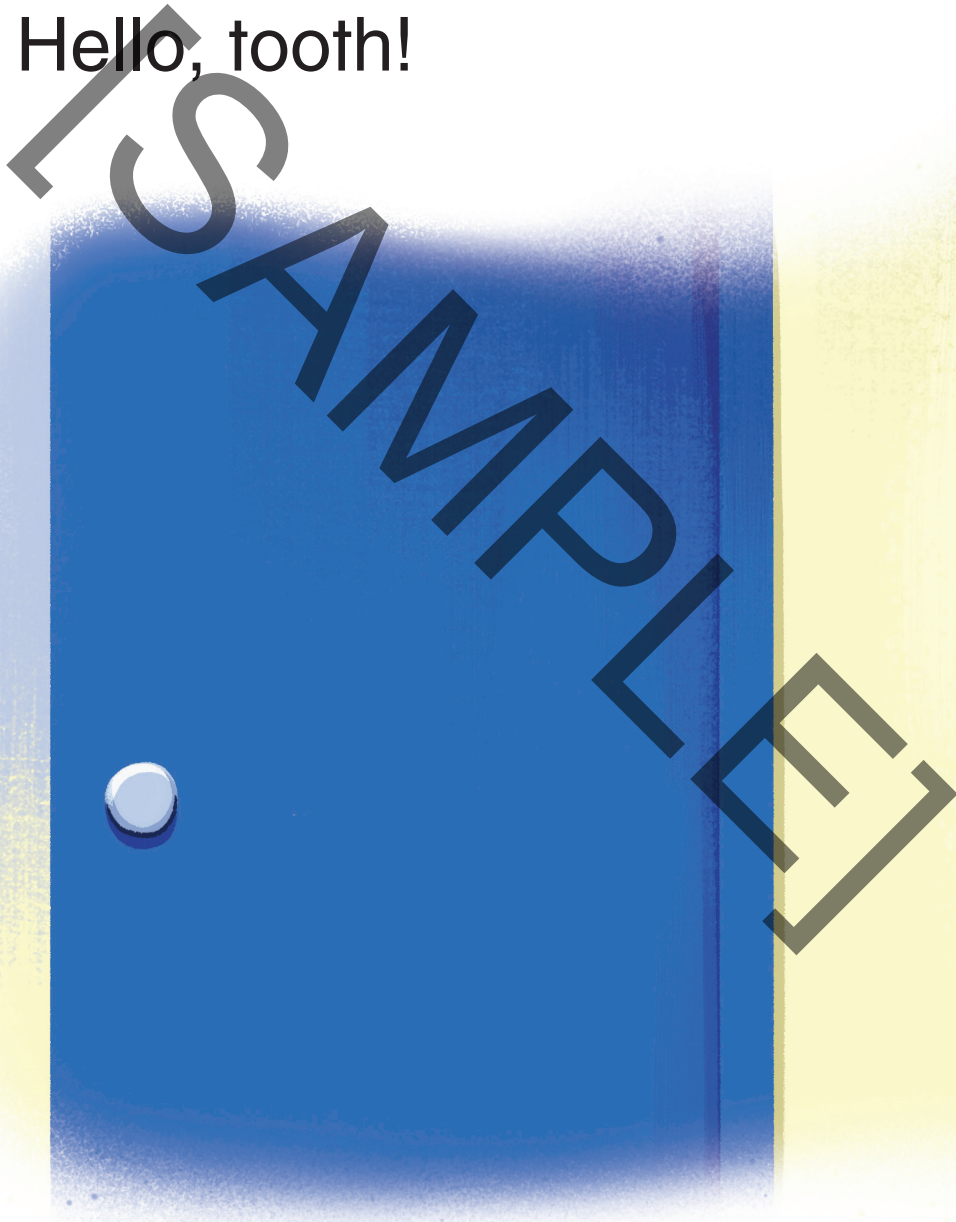
The Tooth Fairy waves
her wand.

Nahid falls asleep.



The next day, Nahid looks in
the mirror.

Hello, tooth!





TSAMPS

Consultant

Theresa Blue

Resource Specialist
Sierra Sands Unified School District, California

Publishing Credits

Rachelle Cracchiolo, M.S.Ed., *Publisher*
Emily R. Smith, M.A.Ed., *VP of Content Development*
Véronique Bos, *Creative Director*

Image Credits:

Illustrated by Ria Maria Lee

Library of Congress Cataloging-in-Publication Data

Names: Jacobs, Parvaneh, author. | Lee, Ria Maria, illustrator.
Title: Nahid's tooth / by Parvaneh Jacobs; illustrated by Ria Maria Lee.
Description: Huntington Beach, CA : Teacher Created Materials, [2022] | Includes book club questions. | Audience: Grades K-1.
Identifiers: LCCN 202006390 (print) | LCCN 202006391 (ebook) | ISBN 9781087600963 (paperback) | ISBN 9781087608587 (ebook)
Subjects: LCSH: Readers (Primary) | Tooth Fairy (Legendary character)--Juvenile fiction.
Classification: LCC PE1119 .A248 2020 (print) | LCC PE1119 (ebook) | DDC 428.6/2--dc23
LC record available at <https://lcn.loc.gov/202006390>
LC ebook record available at <https://lcn.loc.gov/202006391>



5482 Argosy Avenue
Huntington Beach, CA 92649
www.tcmpub.com

ISBN 978-1-0876-0096-3

© 2022 Teacher Created Materials, Inc.

This book may not be reproduced or distributed in any way without prior written consent from the publisher.

Book Club Questions

- 1.** How does Nahid feel about losing her tooth?
- 2.** How is this character like you? How is she different?
- 3.** Have you ever lost a tooth? What happened?

Nahid's Tooth

Nahid has lost her tooth. But she is not ready to let it go. What will she do when the tooth fairy comes?

Reading Levels
Guided Reading: E
DRA Level: 4
Lexile® Level: 340L

120491

